



Telanganaku Haritha Haram  
Government of Telangana



# WELCOME



## PCCF & HoFF

Telangana State Forest Department  
Aranya Bhavan, Hyderabad



- **Objective :**

- To increase the green cover from 24% to 33% in tune with National Forest Policy

- **Strategy:**

- Taking up extensive plantation **outside the notified forest**
- Planting **inside the notified forests,**
- **Rejuvenation** of Degraded Natural Forests



- **Mandate : Plant 230 Crores seedlings in 4 years**
  - **130 crore** seedlings outside the forest area
    - **120 Crs** other areas
    - **10 Crs** in GHMC / HMDA areas
  - **100 crore** seedlings / saplings inside the notified forests
    - **20 Crs** by planting inside Forests
    - **80 Crs** by Rejuvenation of degraded forests
- Achieve these targets in 4 years

# District wise targets for 2020 planting

In Lakhs

S. No.	District	Target	S. No.	District	Target
1	HMDA	500.000	18	Nirmal	64.743
2	GHMC	250.000	19	Bhupalpally	62.865
3	Kothagudem	118.143	20	Sircilla	61.819
4	Nalgonda	107.884	21	Siddipet	61.231
5	Khammam	104.976	22	Medchal	60.624
6	Rangareddy	100.658	23	Vikarabad	60.108
7	Sangareddy	96.487	24	Karimnagar	57.657
8	Mahabubabad	91.833	25	Warangal (R)	57.591
9	Suryapet	83.793	26	Medak	55.700
10	Jagtial	83.449	27	Warangal (U)	53.707
11	Nizamabad	82.452	28	Asifabad	52.628
12	Narayanpet	82.280	29	Jangoan	52.426
13	Mahabubnagar	78.803	30	Adilabad	50.344
14	Peddapally	78.771	31	Wanaparthy	47.636
15	Nagarkurnool	78.300	32	Gadwal	47.091
16	Kamareddy	67.605	33	Yadadri	46.597
17	Mancherial	67.259	34	Mulugu	21.000
<b>GRAND TOTAL</b>					<b>2986.460</b>

## Department wise TKHH Planting Targets for 2020 Planting Season

In lakhs

S. No.	Name of the Department	Target	S. No.	Name of the Department	Target
1	PR & RD	<b>1267.223</b>	14	Health, Medical & Family Welfare	<b>4.943</b>
2	MA & UD	<b>1256.000</b>	15	Tribal Welfare / ITDA	<b>4.605</b>
3	EFS&T	<b>181.423</b>	16	BC Welfare	<b>1.808</b>
4	Agri. & Co.op	<b>118.828</b>	17	Others	<b>1.575</b>
5	Revenue	<b>42.072</b>	18	Women, Children, Disabled & Senior Citizens	<b>1.399</b>
6	Energy	<b>27.526</b>	19	Minority Welfare	<b>0.925</b>
7	Education	<b>17.943</b>	20	Social Welfare	<b>0.735</b>
8	Irr. & CAD	<b>14.525</b>	21	Consumer Affairs, Food & Civil Supply	<b>0.399</b>
9	Home	<b>12.726</b>	22	SC Dev.	<b>0.341</b>
10	Ind. & comm.	<b>11.576</b>	23	Youth Advancement Tourism & Culture	<b>0.142</b>
11	Animal Husbandry, Dairy Dev.& Fisheries	<b>7.848</b>	24	Railways	<b>0.075</b>
12	R & B	<b>6.414</b>	25	Labour, Employment, Training & Factories	<b>0.063</b>
13	Mines & Geology	<b>5.344</b>	26	Govt. Offices/ Insti.	<b>0.003</b>
<b>GRAND TOTAL</b>					<b>2986.460</b>



# Activities Inside the Forests

- **Linear planting :**
  - Peripheral trench bunds, RF boundary lines
- **Block planting (AR):**
  - Semi-Mechanical Method (SMM)
  - Labour Intensive Method (LIM)
- **Assisted Natural Regeneration (ANR):**
  - Peripheral deep trenches
  - Fire lines
  - Cultural Operations
  - Soil and Moisture Conservation works (SMC)



# Activities Outside the Forests

- **Linear planting :**
  - Avenue planting, Canal bunds, Tank bunds, Farm bunds
- **Block planting :**
  - Community lands, Farm lands, Tank beds, Government lands
- **Institutional planting :**
  - Government offices, Local bodies, Colleges, Schools, Housing colonies, Hospitals, Other institutions, religious institutions, grave yards, market yards, others
- **Home stead planting :**
  - Houses, Colonies, back yards
- **Industrial planting:**
  - Industries, Vacant industrial lands
- **Municipalities and Urban areas :**
  - Municipalities, Municipal Corporation, Cities



# Achievements So Far

- **Seedlings raised in Nurseries:**
  - **2014-15:** 38.63 Crores
  - **2015-16:** 46.30 Crores
  - **2016-17:** 46.96 Crores
  - **2017-18:** 44.00 Crores
  - **2018-19:** 78.93 Crores
  - **2019-20 :** 30.29 Crores
- **Total Plants Planted so far: 205.263 Crores**

(169.996 Planted + 35.267 ANR = 205.263 Crs )

  - **2015-16:** 15.86 Crores
  - **2016-17:** 31.67 Crores
  - **2017-18:** 34.07 Crores +25.97 Crores
  - **2018-19:** 31.98 Crores + 4.57 Crores
  - **2019-20:** 38.18 Crores + 4.72 Crores
  - **2020-21:** 18.22 Crores
  - **Geo-tagged:** 14.53 Crores (During 2020-21)
  - **Green Brigades :** 30,906 Teams, 4,82,552 Members.

# Plantation achievement so far

Seedlings in crores

S. No.	Description	Target	No. of seedlings planted (Achievement)						Total
			2015-16	2016-17	2017-18	2018-19	2019-20	2020-21	
1	In -side Forests (by Artificial Regeneration)	20	2.933	3.993	3.939	2.898	3.537	1.967	<b>19.267</b>
	In -side Forests (by Assisted Natural Regeneration)	80	-	-	25.970	4.570	4.727	0.000	<b>35.267</b>
2	Out -side Forests	120	12.667	25.862	28.469	27.777	33.043	12.694	<b>140.512</b>
3	GHMC	3	0.001	0.849	0.768	0.431	0.717	1.665	<b>4.431</b>
4	HMDA	7	0.260	0.970	0.903	0.876	0.881	1.896	<b>5.786</b>
<b>TOTAL HARITHA HAARAM</b>		<b>230</b>	<b>15.861</b>	<b>31.674</b>	<b>60.049</b>	<b>36.552</b>	<b>42.905</b>	<b>18.222</b>	<b>205.263</b>
No of Seedlings distributed								<b>5.971</b>	<b>5.971</b>
<b>Grand Total</b>								<b>24.193</b>	<b>211.234</b>



# Achievements So Far

- **Forest Department:**
  - Nurseries raised :
    - » 2014-15: 27.12 Crores
    - » 2015-16: 30.71 Crores
    - » 2016-17: 30.17 Crores
    - » 2017-18: 31.49 Crores
    - » 2018-19: 24.54 Crores
    - » 2019-20 : 6.86 Crores
  - Total Block plantations so far : 42.803 Ha
  - Total Avenue plantations so far: 7,522 Kms
  - Total area being treated under Aided Natural Regeneration (ANR): 3.50 Lakh Ha
  - Total Peripheral trench dug so far: 8,533 Kms
  - Total Fire lines created so far: 6,875 Kms
  - Urban Forest Parks being developed : 95 Nos. (33 already completed and open for public)



# TKHH – Monitoring and Geo Tagging

- State Level Steering Committee
- State Level Monitoring & Coordination Committee
- District Level Monitoring & Coordination Committee
- Haritha Rakshana Committee
- District Collector is the nodal officer in the District
- All departments are participating in the programme
- All sites and plants planted are being geo-referenced
- Facilities for uploading data and geo-referencing
- Forest Department Website: [www.tgfmis.com](http://www.tgfmis.com)

# STATE LEVEL STEERING COMMITTEE

(G.O.Rt.No.62, EFS&T (For.I) Dept., dt.25.03.2015)

Chief Secretary to Government	-	Chairman
Prl. Secretary /Secretary to Government, <b>Finance</b> Department	-	Member
Prl. Secretary to Government, <b>MA&amp;UD</b> Department	-	Member
Prl. Secretary to Government, <b>PR&amp;RD</b> Department	-	Member
Prl. Secretary to Government, <b>EFS&amp;T</b> Department	-	Member
Prl. Secretary to Government, <b>R&amp;B</b> Department	-	Member
Prl. Secretary to Government, <b>Agriculture and Coop.</b> Department	-	Member
Prl. Secretary to Government, <b>Irrigation</b> Department	-	Member
Prl. Secretary to Government, <b>Revenue</b> Department	-	Member
Prl. Chief Conservator of Forests & HoFF	-	Member / Convener
Commissioner, <b>GHMC</b> , Hyderabad	-	Member
Metropolitan Commissioner, <b>HMDA</b> , Hyderabad	-	Member
Commissioner, <b>Rural Development</b> , TS, Hyderabad	-	Member
Commissioner, <b>Horticulture</b> , TS, Hyderabad	-	Member
Commissioner, <b>Sericulture</b> , TS, Hyderabad	-	Member

The State Level Steering Committee will review the progress of the programme and suggest appropriate interventions for effective implementation of Telangana ku Haritha Haram programme from time to time.

# STATE LEVEL MONITORING AND CO-ORDINATION COMMITTEE

(G.O.Rt.No.71, EFS&T (For.I) Dept., dt.07.10.2014)

Prl. Secretary to Government, EFS&T	-	Chairman
Prl. Secretary to Government, RD	-	Member
Prl. Chief Conservator of Forests & HoFF	-	Member / Convener
Commissioner, GHMC	-	Member
Metropolitan Commissioner, HMDA	-	Member
Commissioner, Rural Development	-	Member
Commissioner, Horticulture	-	Member
Commissioner, Sericulture	-	Member

The State Level Committee will review once in a month and monitor the progress of implementation of Telanganaku Haritha Haram programme and issue necessary guidelines as and when required for smooth coordination and proper implementation.

# DISTRICT LEVEL MONITORING AND CO-ORDINATION COMMITTEE

(G.O.Rt.No.46, EFS&T (For.I) Dept., dt.31.03.2017)

District Collector	-	Chairman
PO, ITDA (In agency area)	-	Member
District Forest Officer	-	Member / Convener
Forest Divisional Officer	-	Member
District Rural Development Officer	-	Member
District Horticulture Officer	-	Member
District Agriculture Officer	-	Member
Municipal Commissioner	-	Member
District Roads and Buildings Officer	-	Member
District Panchayat Officer	-	Member
District Irrigation Officer	-	Member
Representative of SCC Ltd (In Khammam, Bhadradi Kothagudem, Peddapally, Mancherial, Komarambheem, Jayashankar Bhupalpally Districts)	-	Member

# GRAM PANCHAYAT LEVEL HARITHA RAKSHANA COMMITTEE

(G.O.Rt.No.123 EFS&T (For.I) Dept., dt.24.06.2015)

Sarpanch	-	Chairperson
Mandal Parishad Territorial Constituency Member (MPTC)	-	Member
Panchayat Secretary	-	Member Convener
Self Help Group-Gram Samakya Leader	-	Member
A.N.M.	-	Member
Aanganwadi Worker	-	Member
Village Revenue Officer	-	Member
Head Master, Zilla Parishad Primary School/High School	-	Member
President, Village Youth Club	-	Member
Village Extension Officer	-	Member
Field Assistant, MGNREGS	-	Member
NGO (if available)	-	Member
Concerned Forest Beat Officer	-	Member

# URBAN PARKS - STATE LEVEL HIGH-POWER COMMITTEE

S.No.	Designation	Remarks
1	Chief Secretary to the Government	Chairman
2	Prl. Chief Conservator of Forests & HoFF, TS, Hyderabad	Member-Convenor
3	Secretary/ Prl. Secretary/Spl. Chief Secretary to the Government, EFS&T Dept.	Member
4	Prl. Secretary to the Government, MA & UD Dept.,	Member
5	Prl. Secretary to the Government, Industries & Commerce Dept.,	Member
6	Prl. Secretary to the Government, Finance Dept.,	Member
7	Prl. Secretary to the Government, Youth, Advancement, Tourism and Culture Dept.,	Member
8	Commissioner, Greater Hyderabad Municipal Corporation, Hyderabad	Member
9	Metropolitan Commissioner, HMDA, Hyderabad	Member
10	Director General, EPTRI, Hyderabad	Member
11	Managing Director, Telangana State Industrial Infrastructure Corporation	Member
12	Managing Director, Hyderabad Metro Railways	Member
13	Managing Director, TSFDC, Hyderabad	Member
14	Commissioner, Department of Tourism, Hyderabad	Member



Telanganaku Haritha Haram  
Government of Telangana



- Per capita trees in Telangana-28
- Adding another 66 trees per capita in the state
- Two plants for every Indian



# Aided Natural Regeneration (ANR)

## Operations:

- Sample analysis - GIS
  - Deep Peripheral Trench
  - Planting *Caesalpinia bonduc* on trench mounds
  - Fire lines
  - Removal of invasive weeds
  - Cultural operations
  - SMC Works
  - Gap planting
- **Area Treated:** 3.50 Lakh Ha.
  - **Total Seedlings:** 35.267 Crs





Telanganaku Haritha Haram  
Government of Telangana



## Artificial Regeneration (AR) – Plantations



**Total Area : 42,803 Ha**





Telanganaku Haritha Haram  
Government of Telangana



## Avenue Plantations: 7,522 Kms





# KBR Park: Case Study



## ABOUT THE PARK

A national park located in Jubilee Hills, Hyderabad. The park has an approximate area of 352-acre (1.4 km<sup>2</sup>). The park provides an excellent lung space and environment offering a relief to the citizens from the busy city life and rising pollution levels.

## FACILITIES & INFRASTRUCTURE

### Surveillance & Safety

- 32 CCTV cameras installed
- Entry through biometric electronic system
- 2 watch towers

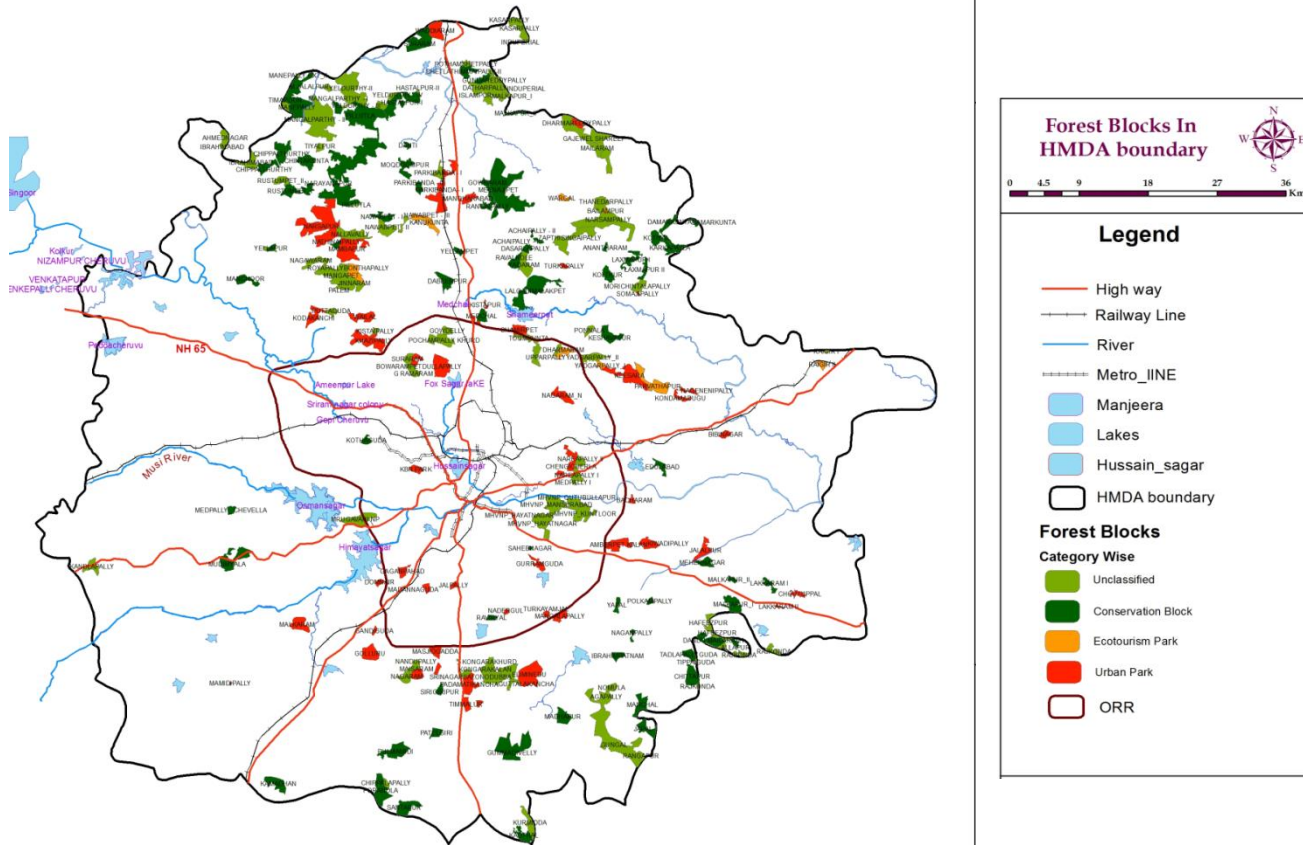
### Convenience & Sustenance

- Earthen pathway across the park
- 40 sit outs and 8 toilets
- Water barriers
- Nature Camps





# FOREST BLOCKS WITHIN HMDA LIMITS





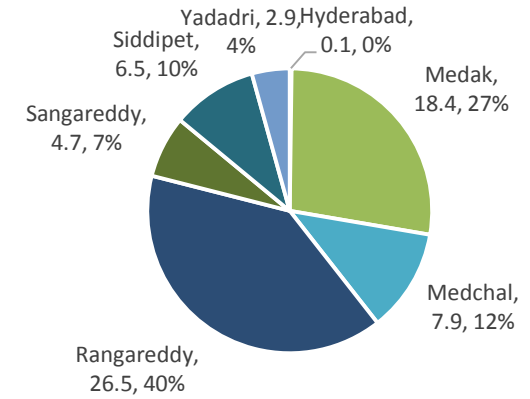
# Telanganaku Haritha Haram

Government of Telangana



Area (Ha)	Hyd	Medak	Medchal	RR	SR	Siddipet	Yadadri	Total
0-500	1	29	32	55	13	10	16	<b>156</b>
500-1000		4	2	8	2	2		<b>18</b>
1000-1500		2	1	2		2		<b>7</b>
1500-2000		2		1		1		<b>4</b>
2000-2500				1				<b>1</b>
3500-4000				1				<b>1</b>
4000-4500		1						<b>1</b>
<b>Grand Total</b>	<b>1</b>	<b>38</b>	<b>35</b>	<b>68</b>	<b>15</b>	<b>15</b>	<b>16</b>	<b>188</b>

**Area (k Hectares)**  
**Total Area – 64.053 Ha**



S. No.	Category	No. of Locations	Area in Ha.	Amount Rs. in Lakhs
1	Urban Parks	52	21834	30042.00
2	Eco-tourism spots	7	2264	3296.00
3	Conservation blocks	70	39955	16030.00
	<b>TOTAL</b>	<b>129</b>	<b>64053</b>	<b>49368.00</b>

## URBAN FOREST PARKS BEING DEVELOPED IN THE STATE

Agency	No. of Locations	Completed & Open for Public	Work commenced & in Progress	Yet to Start
<b>WITHIN HMDA LIMITS</b>				
FOREST	24	17	6	1
HMDA	16	0	16	0
TSIIC	10	0	7	3
TSFDC	4	1	3	0
GHMC	3	0	3	0
HMR	2	0	2	0
<b>TOTAL</b>	<b>59</b>	<b>18</b>	<b>37</b>	<b>4</b>
<b>OUTSIDE HMDA</b>				
FOREST	36	15	6	15
<b>GRAND TOTAL</b>	<b>95</b>	<b>33</b>	<b>43</b>	<b>19</b>

# CONSTITUTION OF GREEN BRIGADES (GUIDELINES)

*(G.M.No.2991/For.I2)/2017-1, dt.18.08.2017)*

- Each Green Brigade will have 51 members.
- A prominent person a team leader
- Any citizen can volunteer to become a member in the Green Brigade.
- Green Brigades can be constituted all levels
- It will be purely a voluntary service
- The District Collectors shall authorize to constitute the Green Brigades



# Expenditure Under TKHH (Fin. Fig in Crores)

Department	Year wise expenditure							
	2014-15	2015-16	2016-17	2017-18	2018-19	2019-20	2020-21	TOTAL
Rural Development	257.00	365.05	401.59	455.73	687.33	661.93	299.53	3128.17
Forest	111.21	229.00	288.56	248.36	222.94	293.11	59.65	1452.83
HMDA	0.00	39.76	35.28	25.08	47.61	70.47	9.03	227.24
GHMC	0.00	24.91	13.27	16.11	4.48	51.39	0.00	110.15
<b>TOTAL</b>	<b>368.20</b>	<b>658.72</b>	<b>738.71</b>	<b>745.28</b>	<b>962.36</b>	<b>1076.90</b>	<b>368.21</b>	<b>4918.38</b>



# Telangana Haritha Mitra Awards



## District Level Awards

- Individual : 5
- Institutional : 11

## State Level Awards

- Individual : 5
- Institutional : 16

## Award Money

- Individual : from 1 to 2 lakhs
- Institutional : from 2 to 15 lakhs

**Total Award Money :Rs.15.00 Crores**





# Miyawaki Plantation – An Experiment

- Planted in July,2017
- Area 1.30 Ha
- 10,000 Plants / Ha planted
- Spacement 1x1 Mtr
- 47 Types of plants planted
- All native varieties
- Plants of different canopies
- Complete protection – Fenced
- Survival 95%





# Miyawaki Plantation – An Experiment

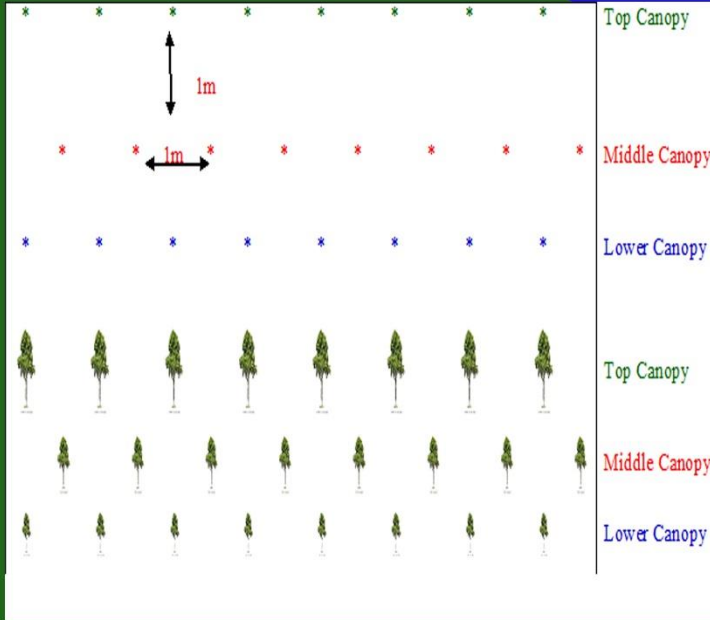


## FOREST DEPARTMENT MANCHERIAL DISTRICT



### PLANTING MODEL IN MIYAWAKI SYSTEM AND NAME OF THE PLANTS PLANTED

#### Details of plants planted in the Miyawaki Plantation



Top canopy species			Middle canopy species			Lower canopy species		
S No	Local name	Scientific name	S No	Local name	Scientific name	S No	Local name	Scientific name
1	Bandaru	<i>Azadirachta indica</i>	1	Bambo	<i>Dendrocalamus strictus</i>	1	Karenga	<i>Gardenia resinifera</i>
2	Battaganam	<i>Mitragyna parvifolia</i>	2	Būdu	<i>Chloroxylon swietenia</i>	2	Ramaphal	<i>Annona reticulata</i>
3	Buruga	<i>Ceiba pentadra</i>	3	Buddadarimi	<i>Caria arboria</i>	3	Sithaphal	<i>Annona squamosa</i>
4	Nalla Chinduga	<i>Albizia procera</i>	4	Chūkaduddi	<i>Polyalthia cerasoides</i>	4	Rela	<i>Cassia fistula</i>
5	Chinta	<i>Tamarindus indica</i>	5	China Are		5	Vishamusti	<i>Strychnos maxvomica</i>
6	Ippa	<i>Maduca indica</i>	6	Gummadi tekū	<i>Melina arboria</i>	6	Usiri	<i>Embilca officinalis</i>
7	Kalagoru	<i>Heterophragma quadriloculare</i>	7	Jitregi	<i>Dalbergia latifolia</i>	7	Eetha	<i>Phoenix sylvestris</i>
8	Kondamamidi	<i>Spondias pimata</i>	8	Iriki	<i>Cordia myxa</i>			
9	Marri	<i>Ficus benglensis</i>	9	Juvvi	<i>Ficus tomentosa</i>			
10	Tella chinduga	<i>Albizia procera</i>	10	Kanuga	<i>Pongamia pinnata</i>			
11	Nallamaddi	<i>Terminalia tomentosa</i>	11	Karaka	<i>Corynocarpus laevigatus</i>			
12	Narepa	<i>Haradwickia binata</i>	12	Maredu	<i>Aegle marmelons</i>			
13	Nemalinarā	<i>Holoptelea integrifolia</i>	13	Medi	<i>Ficus glomerata</i>			
14	Ravi	<i>Ficus religiosa</i>	14	Moduga	<i>Butea monosperma</i>			
15	Somi	<i>Soyamida fabrifuga</i>	15	Netikanuga				
16	Tani	<i>Terminalia bellirica</i>	16	Panasa	<i>Artocarpus heterophyllus</i>			
17	Teak	<i>Tectona grandis</i>	17	Pendlipala				
18	Tellamaddi	<i>Terminalia arjuna</i>	18	Pulichinta	<i>Inga dulcis</i>			
19	Vepa	<i>Azadirachta indica</i>	19	Sisso	<i>Dalbergia sissoo</i>			
20	Yegisa	<i>Pterocarpus marsupium</i>	20	Velaga	<i>Feronia limnonia</i>			



# TSFA Dulapalli - Trainings



# Haritha Pathashala-Haritha Telangana



- Haritha Pathashala – Haritha Telangana organized on 25.08.2018
- All educational institutions involved
- 39 Lakhs children involved in High Schools alone
- 14.85 Lakhs students in 6,304 Govt. High Schools
- Green Brigades constituted
- Nearly 68 Lakhs Plants planted
- TSFA organized the training



# Vana Darshini – Awareness Programme



- 728 programmes involving 776 Schools
- 50,435 Students covered so far
- DFO Coordinating in each district
- Govt. High Schools targeted
- 9<sup>th</sup> , 10<sup>th</sup> class students targeted
- One day programme
- Education, Forest and TSRTC deptt involved



# Vana Darshini – Awareness Programme



- Guest Lectures
- Snakes show etc
- Field Trials
- Planting Activity
- Botanisation
- Awareness about forests and wildlife



# Online monitoring – tgfmis.com

- Website – [www.tgfmis.com](http://www.tgfmis.com)
- Dashboard for districts
- Information on public domain
- Provision for Geo tagging
- Individual plantations can be viewed
- Daily Progress Reports
- Weekly Progress Reports
- District Action Plans
- Nursery Progress



Telanganaku Haritha Haram  
Government of Telangana



## Prl. Chief Conservator of Forest's Dashboard

### REPORTS

#### PLANTATIONS PROGRESS

- TKHH Abstract
  - District Wise Daily Progress
  - Department Wise Weekly Progress
- Geo tagging
  - Department Wise Planting Progress
  - Planting Progress And Geo Tag
  - District wise
  - Site Registration Details
  - District Wise Comparison
  - District Wise Geo-Tagging
  - View Individual Plantation Details
- PLANTATION MONITORING
- GREEN BRIGADE
- DISTRICT ACTION PLAN
- NURSERY
- URBAN FOREST BLOCKS

### Planting Achievements (in Lakhs)

<b>District : Adilabad</b> Target : 100 Planted : 61.67 Balance : 38.33 Geotagged : 61.64 <b>61.6</b> View Report	<b>District : Komaram bheem</b> Target : 72 Planted : 52.43 Balance : 19.57 Geotagged : 51.69 <b>72.8</b> View Report	<b>District : Bhadradi</b> Target : 95 Planted : 82.82 Balance : 12.18 Geotagged : 82.77 <b>87.1</b> View Report	<b>District : Jayashankar</b> Target : 113 Planted : 71.75 Balance : 41.25 Geotagged : 71.71 <b>63.5</b> View Report
<b>District : Jogulamba</b> Target : 84 Planted : 17.58 Balance : 66.42 Geotagged : 16.15 <b>20.9</b> View Report	<b>District : Jagtial</b> Target : 140 Planted : 142.81 Balance : -2.81 Geotagged : 140.61 <b>100</b> View Report	<b>District : Jangoan</b> Target : 87 Planted : 72.07 Balance : 14.93 Geotagged : 62.5 <b>82.8</b> View Report	<b>District : Kamareddy</b> Target : 132 Planted : 102.24 Balance : 29.76 Geotagged : 96.1 <b>77.4</b> View Report



# Telanganaku Haritha Haram

Government of Telangana



**Nurseries : 13,752 Nos**



Telanganaku Haritha Haram  
Government of Telangana



**Thank You**