

SINGAPUR VILLAGE



HIMANI MEHTA

MAMTA KALRA

ARUNA ARORA

SUMAN PATEL



What made Singapur so Special ?



Connected to
National Highway



Peaceful Village



Negligible
Crime Rate



Healthy
Population

Demographic Profile

MANDAL - HUZURABAD DISTRICT - KARIMNAGAR



HINDU POPULATION

2448 SIZE OF VILLAGE



TELUGU SPEAKING

665 HOUSEHOLDS



PUCCA HOUSES

2015 VOTERS



AGRARIAN SOCIETY

532 MGNREGS JOB CARDS

Civic Amenities



Schools



Temple



Water Purification Plant



ATM & Bank Branch



Veterinary Health Centre



Me-Centres

Socio-Economic Map of Singapur

SOCIO ECONOMY MAP G.P. SINGAPUR



Agriculture & Allied Sector

- Agricultural & Farmers' Profile
- Government Interventions
- Key Challenges
- Experience



Agricultural & Farmers' Profile

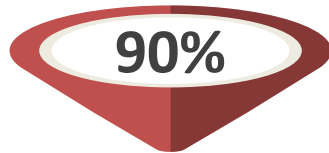
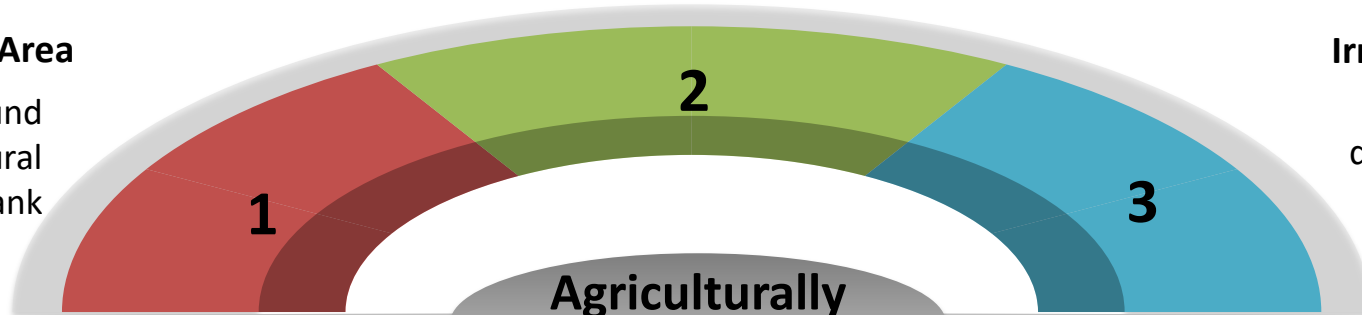
Potassium & Phosphorus Rich Soil + Black Soil

Command Area

Abundance Ground
Water with Natural
100 acres Tank

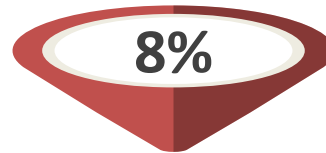
Irrigation Facilities

Singapur on the
downstream of the
canal - Shri Ram
Sagar Project



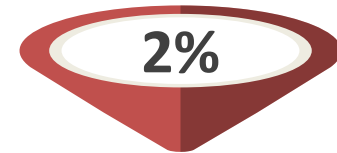
Paddy

↑
50%



Maize

25%
↓



Cotton

25%
↓

Marginal Farmers
488.52 acres

Small Farmers
268.43 acres

Medium Farmers
261.6 acres

Large Farmers
91.65

Landless
No
Information

Total Cultivable Area – 1456 acres

Government Interventions

Farmer Training Centres

- KVKs are situated in Huzurabad district approx. 20 kms.
- Farmers are really enthusiastic.
- Distance don't matter 😊

01

Krishi Vigyan Kendra (KVKs)

02

Haritha-Haram

03

Soil Health Cards & PM Kisan

Haritha-Haram

- A very good initiative – planted Mango Trees, Tamarind Plants, Guava Trees, Apple Berries etc.
- No Funds – No Labour – No Benefit to Farmers

Rythu Schemes

Rythu Bandhu & Rythu Bima

Rythu Bandhu

Providing INR 5000 per season and INR 10000 per year to all Farmers regardless of their Economic Status

Rythu Bima

Crediting INR 50000 within 48 hours in events of farmers death

04

Other Schemes

Soil Health Cards

Aware Farmers are using SHCs to monitor their soil status. More awareness needed.

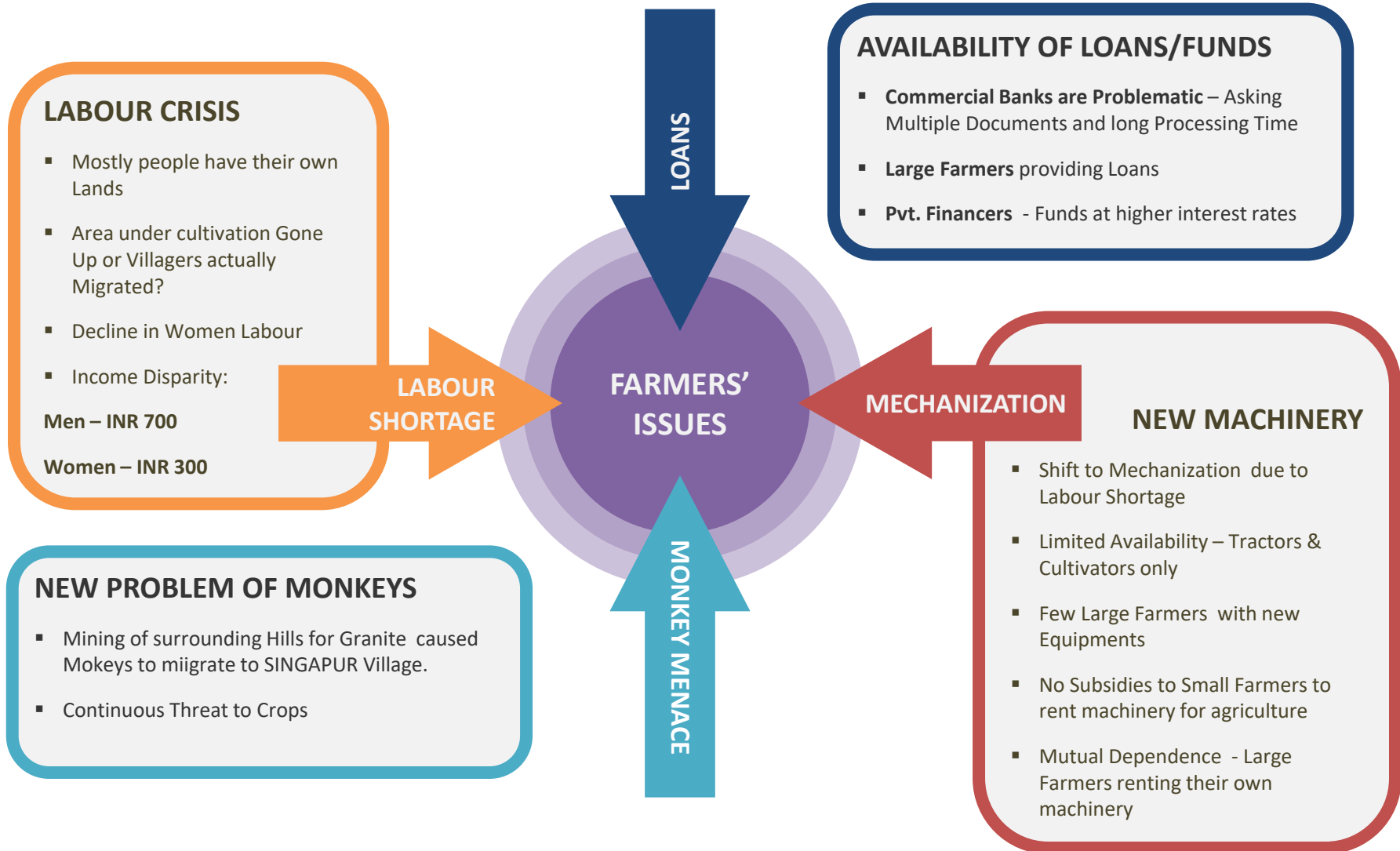
PM – KISAN

Financial Support to Small & Marginal Farmers

30 Day Action Plan

24x7 Electricity to Farmers for a nominal charge of INR 30

Key Challenges

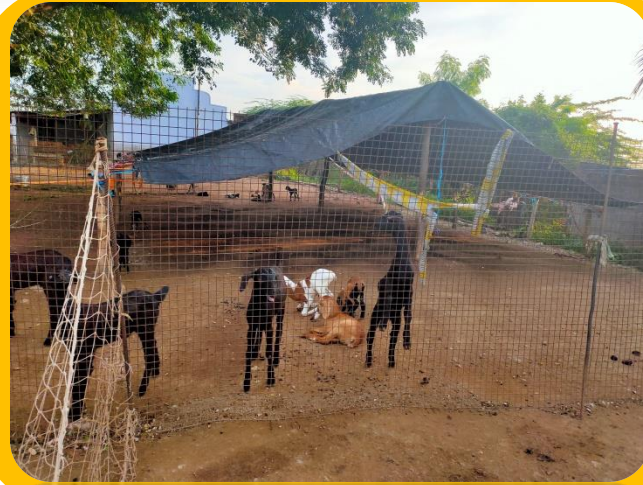


Allied Sector

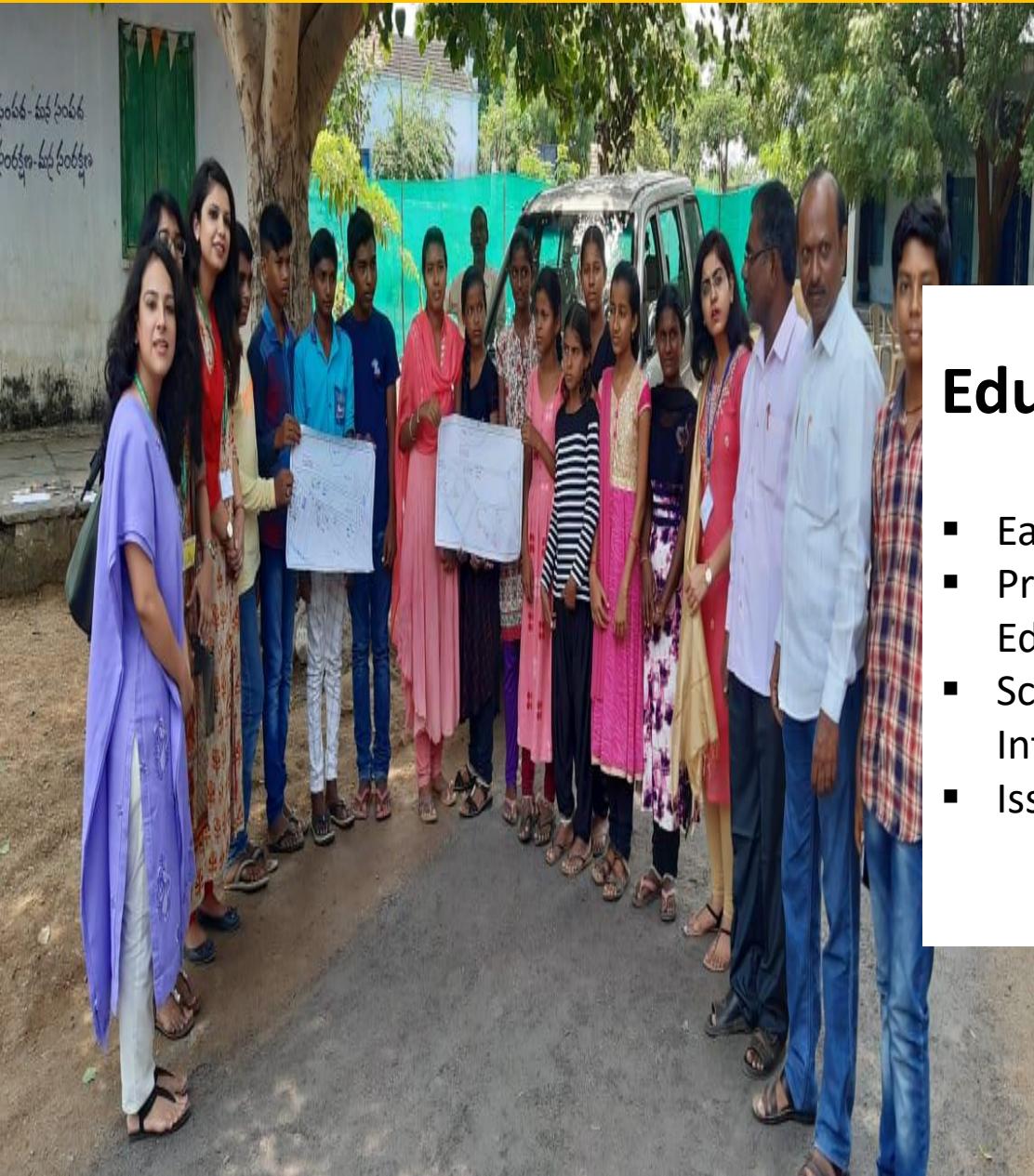
Sericulture



Cattle Rearing



Animal Husbandry



Education Sector

- Early Education
- Primary & Upper Primary Education
- School Environment & Infrastructure
- Issues & Way Ahead

Early Education – 3 to 6 Years

Integrated Child Development Scheme (ICDS)

Flash Card Demonstration



State-Provided Text Books



Mid – Day Meal Scheme



Anganwadi Workers – Building Blocks of Nation's Future

Key Observations

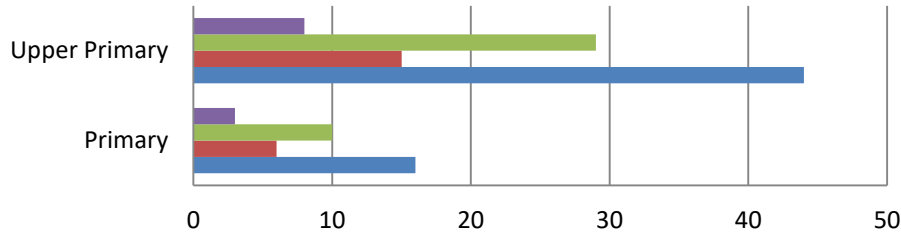
**Non- Formal
Education**

**Nutritional & Health
development**

**Request for raised
Honorarium**

Primary & Upper Primary - Analysis

Distribution of Primary & Upper-Primary Classes



	Primary	Upper Primary
Teachers	3	8
Girls	10	29
Boys	6	15
Total Students	16	44

Data corresponds to Village Govt. schools

More FEMALE STUDENTS than MALE STUDENTS

Majority students attending Private Schools at Huzurabad

Education Bias – Majority Male Children being sent to Pvt. Schools

Pupil – Teacher Ratio is approximately 6. Good Enough !!

No Sports Infrastructure

1

- No PT Teacher
- No Yoga Teacher
- No Proper Playgrounds

- Very Basic Computer Knowledge to Students
- No Computer teacher

2

No Formal Computer Education

Inculcating Leadership Skills

3

- Assembly Cabinet –
- Prime Minister
- Health Minister
- Education Minister

Schools closed due to Dussehra Festivities. Thus, not much interaction with Students

4

100% Classroom Results

Career-Oriented Students

5

High Aspirations among Students. Strong – Headed Goals

School Infrastructure – The Best we could do !

Sanitation	Pre-Primary : Combined Classes	Engineering Inclination	Computer Lab with No Teacher	No Higher Sec./Pvt. School
<ul style="list-style-type: none"> Pre-Primary School Upper Primary Schools <p>Toilets</p> <p>Separate and Clean Toilets For Girls, Boys and Differently-Abled Students</p> <p>Drinking Water</p> <p>Filtered Water from Bala Vikas Water Purification Plant</p>	<ul style="list-style-type: none"> Pre-Primary School <p>Combined Classroom for students of Different Classes</p> <ul style="list-style-type: none"> Upper Primary School <p>Separate Classrooms for all Classes</p>	<ul style="list-style-type: none"> Kamala Institute of Technology & Science <p>Students from different districts as well as Singapur Village inclined towards Engineering as Profession</p> <p>Close Proximity to Singapur Village – 200 meters</p> <p>Good Private Placement Opportunities with decent packages</p>	<p>Computer Lab available with 10 Computers including Projector.</p> <p>No Computer Teacher to impart Technical Skills</p>	<p>No Government School for Higher Education in the Village</p> <p>No Private School even for Primary and Upper Primary</p> <p>Private Schools at Huzurabad</p> <p>Attempt to Open Private School by the MPs and MLAs but in vain</p>

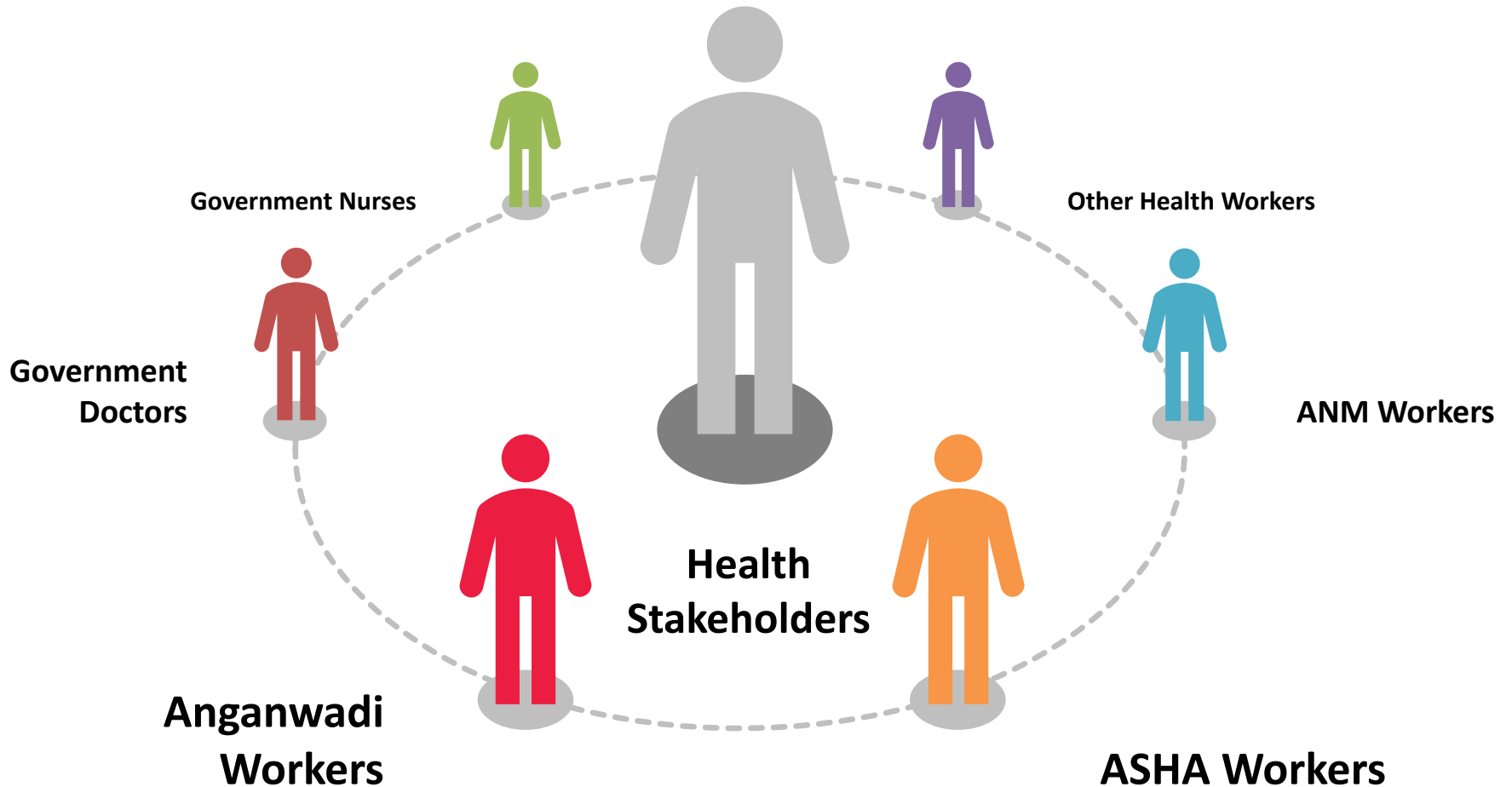




Health Sector

- Major Stakeholders
- Institutional Aspects
- Major Challenges

Major Stakeholders



Roles & Responsibilities

Anganwadi Workers

Supplementary nutrition to eligible women & children

Immunization & General Health Advice

Poshan Arogya Vidya - Raising awareness regarding nutrition & health

Record of Middle Arm circumference for pregnant women & children.

- 3 categories- Green(normal), yellow(medium) & red(dangerous)
- Every month weight measured & every 3 months, MAC & height taken.

Cycle Rally to generate awareness about quality food

Food Awareness Day- Targeting mothers. Variety of food displayed & its nutrition content explained

Anna Prasana - First food consumption of the infant in ICDS premises

Rashtriya Poshan Abhiyaan – Mothers & Adolescent Girls

ASHA – ANMs – Health Workers

1 ANM for 3-4 villages. 2 ASHAs for Singapur village

Work timetable for every day of the week

Weekly Schedule

Monday

Check-ups of Pregnant Women

Tuesday

Reviewing sanitation status of village

Wednesday

Undertaking Immunization

Thursday

Taking pregnant women to hospital if required

Friday

'Dry day'- Removal of stagnant water

Saturday

Outreach Sessions - Door-to-door counselling

Govt. Hospital Staff

Community Health Centre stationed at Huzurabad

Specialty Hospital

Excellent Cleanliness & Hygiene

Citizen Charter

Steps towards Transparency & Accountability

Digitized Pharmacy

Highly Motivated Staff

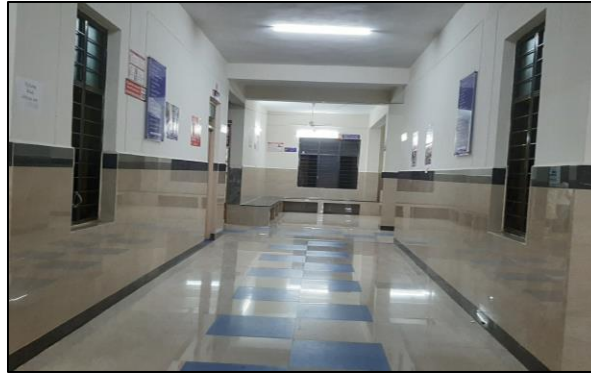
Trust of Patients

Resolution of High Risk Cases

Success Story of Community Health Centre



Well Structured Building



Cleanliness & Hygiene



Citizen Charter

100 %



Board displaying every doctor with photo and name

తెలంగాణ వైద్య బిధాన పరిషత్
 శ్రీ సీవల్ - మన మాజురాబాద్ వైద్యులు
 వైద్యులు రోజు వార నిధుల పట్టిక - ఏంయూ ఆసుపత్రి, హజూరాబాద్, కరీంనగర్ జిల్లా

క్ర.సం	వైద్యులు	ప్రత్యేకత	పోషణం	కుంకణం	బుధవారం	గురువారం	శుక్రవారం	ఆదివారం	ఆదివారం
1.	డా. టి. రవి ప్రకాష్ రెడ్డి	రంగ వైద్య నిపుణులు	OP	OP	OP	OP	OP	OP	OP
2.	డా. ఎ. రమ్య	రంగ రిపోజ్ వైద్యులు	OP	OP	Weekly off	Night Duty	PDO	OP	Weekly off
3.	డా. ఎ. అర్జున్	కీళ్ల వైద్య నిపుణులు	OP	OP	OP	OP	OP	OP	OP
4.	డా. ఎ. శ్రీకాంత్ రెడ్డి	జువరీ & ల్యాబ్ వైద్య నిపుణులు	OT	Ward	OT	Ward	Weekly off	Night Duty	PDO
5.	డా. టి. రమ్య	పెద్దల వైద్య నిపుణులు	PDO	OP	OP	OP	OP	OP	Night Duty
6.	డా. టి. మహాబీబ్	మచ్చ మందు వైద్య నిపుణులు	Night Duty	PDO	OT	OT	OT	OT	Weekly off
7.	డా. టి. ప్రత్యక్ష	చివ్వి, ముక్కు, గొంతు నిపుణులు	OP	Weekly off	Night Duty	PDO	OP	OP	OP
8.	డా. సి. శ్రీనివాస్	కీళ్ల వైద్య నిపుణులు	OP	OP	Weekly off	Night Duty	PDO	OP	OP
9.	డా. ఎ. సుధాకర్ రెడ్డి	మచ్చ మందు వైద్య నిపుణులు	Weekly off	Night Duty	PDO	OT	OT	OT	OT
10.	డా. కె. సురంజన్	మచ్చ మందు వైద్య నిపుణులు	OT	OT	OT	Weekly off	Night Duty	PDO	OT
11.	డా. ఎ. సుధాకర్ రెడ్డి	యువ వైద్య నిపుణులు	OP	OP	OP	OP	OP	OP	Weekly off

స్త్రీల వైద్య నిపుణులు రోజువార పట్టిక:

12.	డా. వై. బాలిక	స్త్రీల వైద్య నిపుణులు	Night Duty	PDO	OT	Weekly off	Night Duty	PDO	OP & OT
13.	డా. టి. బాలిక	స్త్రీల వైద్య నిపుణులు	OT	Night Duty	PDO	OP & OT	Weekly off	Night Duty	PDO
14.	డా. టి. లీలారాణి	స్త్రీల వైద్య నిపుణులు	PDO	OT	Night Duty	PDO	OP & OT	Weekly off	Night Duty
15.	డా. యె. రామయ్య	స్త్రీల వైద్య నిపుణులు	OP	OP	OP	Night Duty	PDO	OP&OT	Weekly off

డా. టి. రవి ప్రకాష్ రెడ్డి
 మెడికల్ సూపరిండెంట్,
 ఏంయూ ఆసుపత్రి, హజూరాబాద్

Sitting days & time of every doctor

Patients' Satisfaction Quotient

Worth Mentioning Schemes

Formal Registration of pregnancy with ANM worker

Account number given by the mother in which she received direct benefits

Financial Assistance to Pregnant women - Rs. 12,000 in three instalments.
Additional Rs. 1000 for Baby Girl

KIT Essentials - Baby oil, Soaps, Mosquito net, Dresses, Toys, Diapers, Powder, Shampoo etc.

MCP Cards



The card continues till the child is 5 years of age

It contains the immunization plan as well



KCR KITS

Increased Public Health Institutional Deliveries by about 16% from 32.8% to 47.2% since the launch in June, 2017

Honorarium to ICDS Workers

High Rate of C-Sections

No Health Sub-Centre Buildings

Key Challenges

Visual Proofs



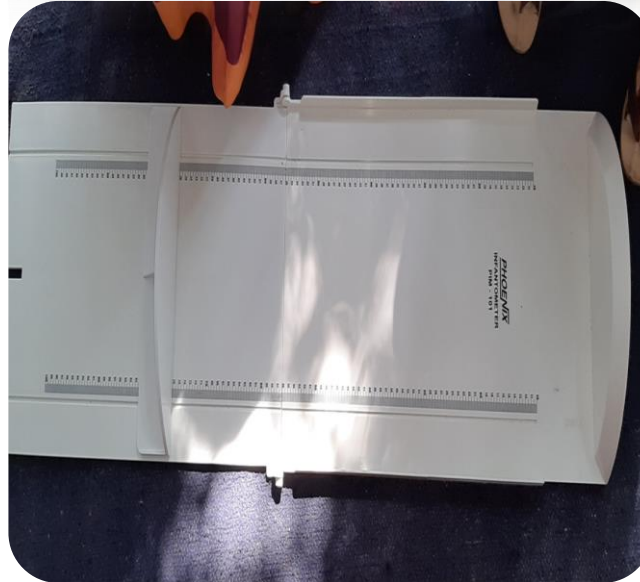
Anganwadi Workers



Meeting with ASHA, A&M - Health Workers



MACR BAND



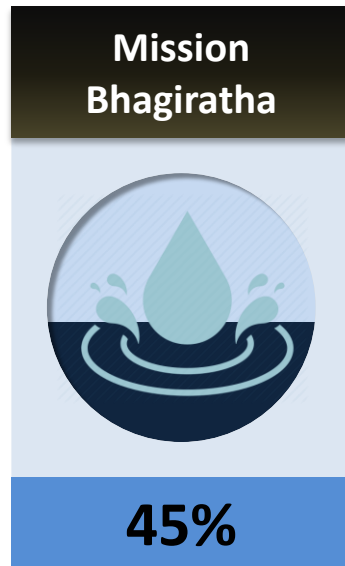
KCR KIT



Sanitation Aspects

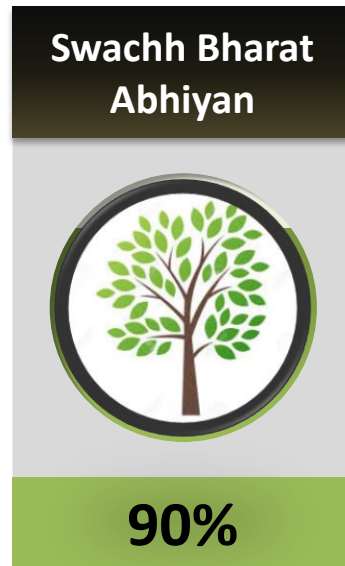
- Components & Progress Card
- Visual Proofs

Components



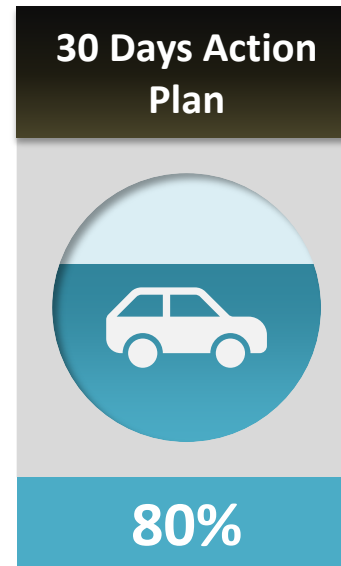
Findings

- Grid- water purification & provision upto village point
- Intra-village- within village water storage & transportation
- Pipeline not fully completed. Has leaks & damages
- Water being re-routed through Gram Panchayat pipelines.
- Bhagiratha taps in houses donot have running water.



Observations

- ODF status
- SHGs touring around the village with whistles to shoo away villagers going in Open
- Dustbins for Plastic waste Collection
- Hygiene Awareness
- IHHL – Functional Toilets in almost all HHs



Objective

- Seeks to transform the state's villages.
- Sanitation, greenery and electricity are key components



BALA VIKASA Water Purification Plant

- Installed in 2010 by SOPAR-CIDA, Canada
- Prepaid Cards Issued to Villagers to collect filtered water

Visual Proofs



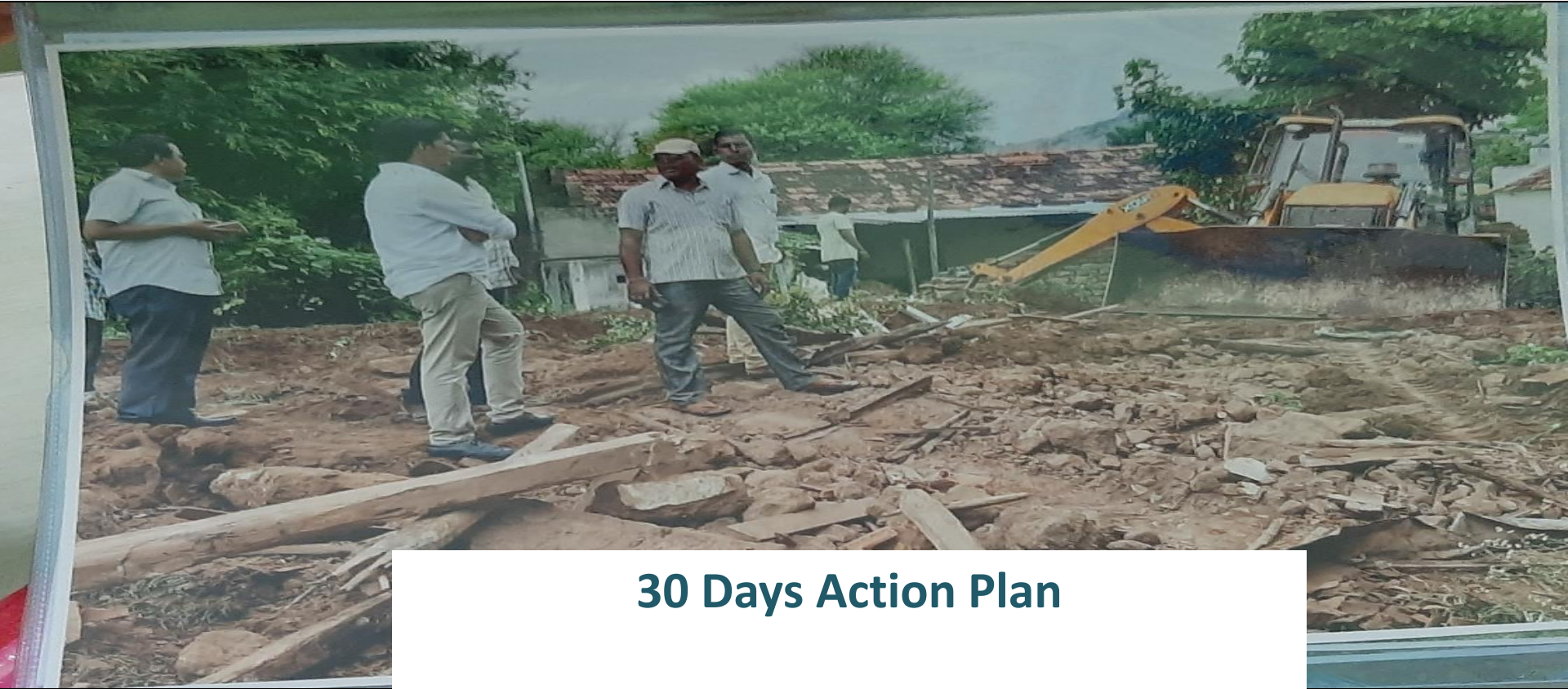
Meeting with Asst. Engineer, Mission Bhagiratha



BALA VIKASA Water Purification Plant



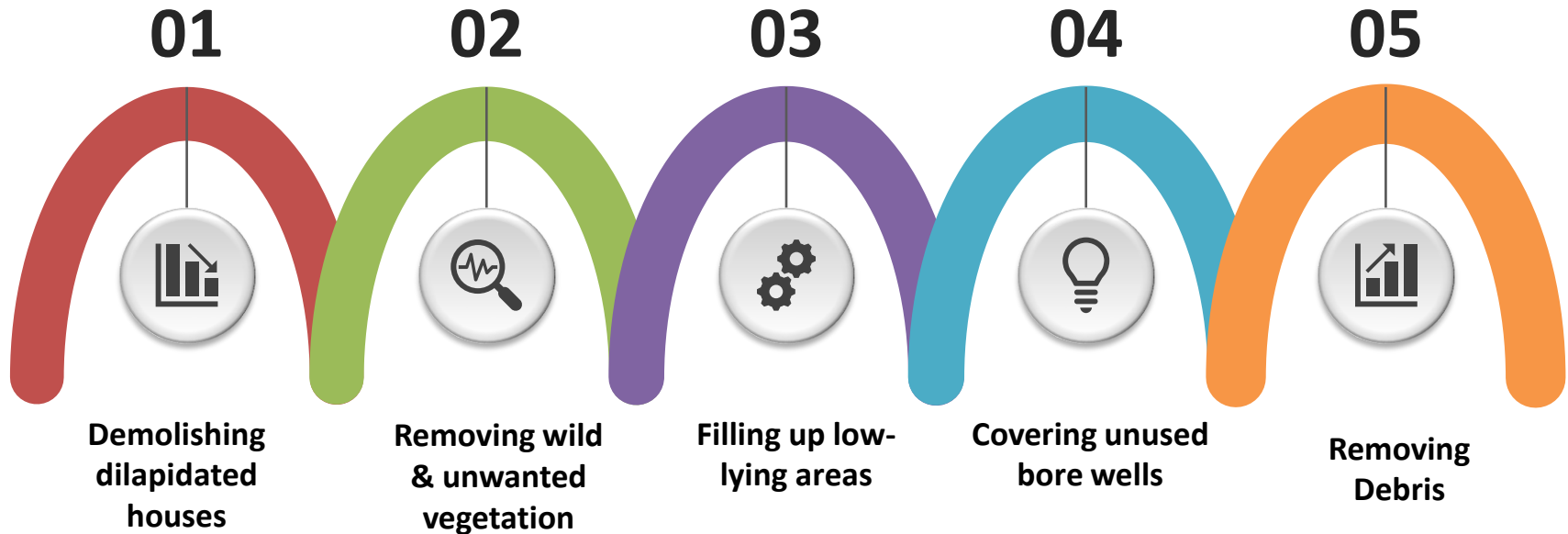
Toilet being utilized for other Purposes



30 Days Action Plan

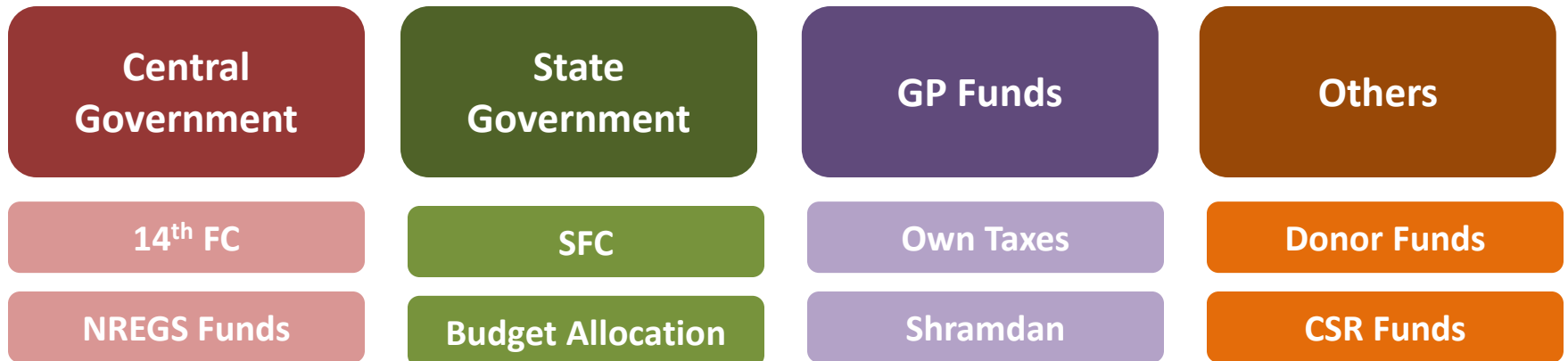
- Components & Funding
- Major Activities Undertaken
- Challenges

Components & Funding



Components

Funding



Activities Undertaken

01



- Ward-wise Gram Sabhas
- Maintenance of 3 separate registers
- Mosquito sprays
- Oil Balls
- Toilet repairs
- Separate plastic trash bins

02



- SHG grouping
- Cleanliness varied widely across wards depending on household initiative
- Shramdaan to clean public spaces

By Gram Panchayat



Oil Bags



Plastic Waste Management



Demolition of Abandoned Houses

Private Initiative

Major Challenges

07 FALLOW LANDS

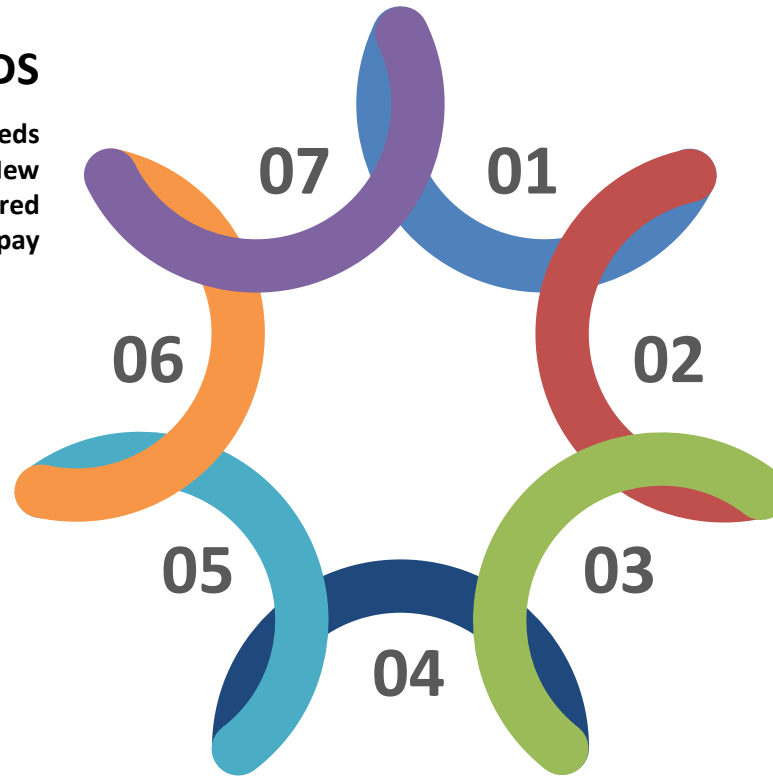
Substantial fallow land with weeds due to urban migration. Acc to New Gram Panchayat Act, land transferred to GP is pvt person doesnot pay requisite amount

06 DUSTBINS

Household dustbins not provided to dispose dry & wet waste separately

05 WATER-LOGGING

Water stagnation on roads especially in the old part of village due to pot holes. However, 90% roads are concrete



SWEEPERS

Only 3 sweepers for a population of 2400 whereas the norm is 500:1

SALARIES

Only 30% of GP funds can be used for 'salaries'

PRIVATE LABOUR

GP engaging pvt labour once a month using other expenditure heads like 'sanitation'

DRAINAGE

Drainage not adequate. At many places, drains are uncovered.



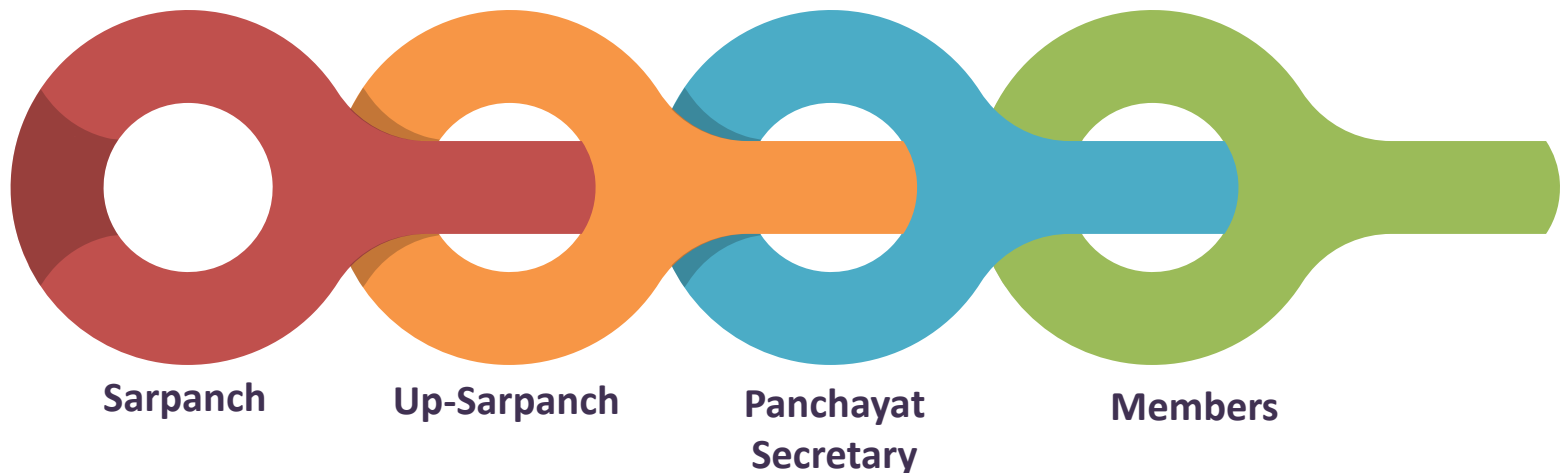
Gram Panchayati Institution

- Overview
- Funds Collection & Allocation

Overview

Structure

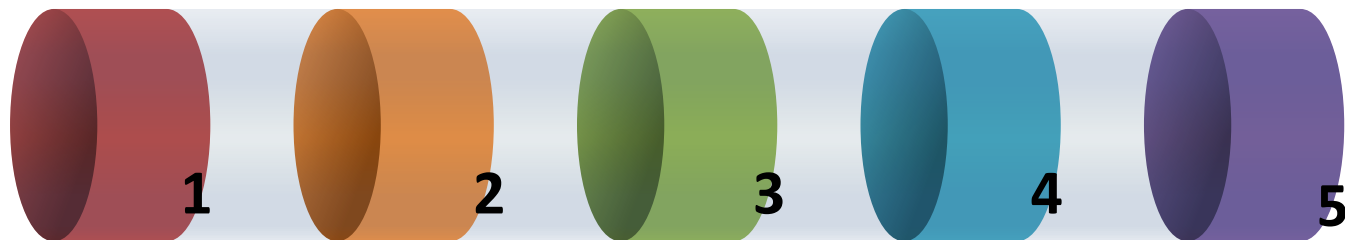
6 Females
5 Males
33% BC
9% SCs/STs



CASH REGISTER

AGENDA REGISTER

Records Maintained



MARRIAGE REGISTER

DEATH REGISTER

ATTENDANCE REGISTER

Funds Collection & Allocation

Sources of Own Funds

House Tax

Library Cess

Tap Fees

Drainage
Tax

Light Tax

Water Cess

Allocation of Own Funds

30%

Salaries

15%

Protected
Water Supply

15%

Electricity

15%

Sanitation

20%

Development
Works

5%

Office
Management

Allocation of 14th FC Funds

50%

Capital Works,
CC Roads,
Permanent
Structures

10%

Haritha –
Haram

15%

Sanitation

15%

CC Current
Charges Bill

20%

Operations &
Management

5%

Office &
Miscellaneous

Allocation of SFC Funds

25%

Maintenance Purpose,
Main electricity

75%

Capital
Works

General fund maintained in SBI Huzurabad branch.
Revenue deposited in form of challans there. It adds to
general fund i.e. own funds

Good-Byes are the Hardest !!

