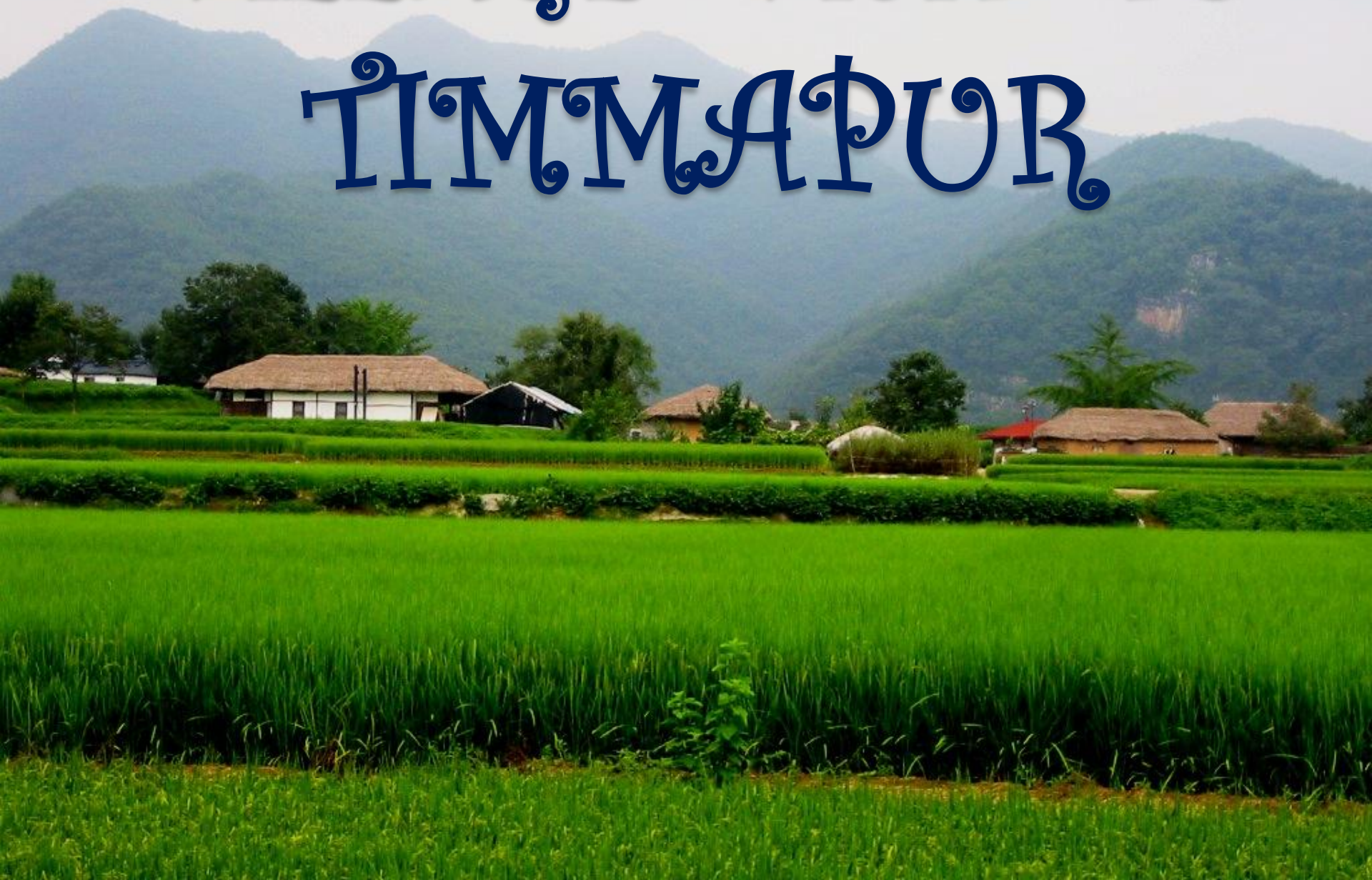


VILLAGE VISIT TO TIMMAPUR



TEAM TIMMAPUR



Dr. Sarath Babu
(Group Leader)

TEAM TIMMAPUR ...



Hairatjit Kaur

TEAM TIMMAPUR



Vimla Nawaria

TEAM TIMMAPUR

...



Aadesh Ji

Anand Ji

RAPPORT BUILDING...



RAPPORT BUILDING...



TIMMAPUR AT A GLANCE

Village :- Timmapur

Latitude:16.6152 Longitude:78.952



Mandal:- Chandampet

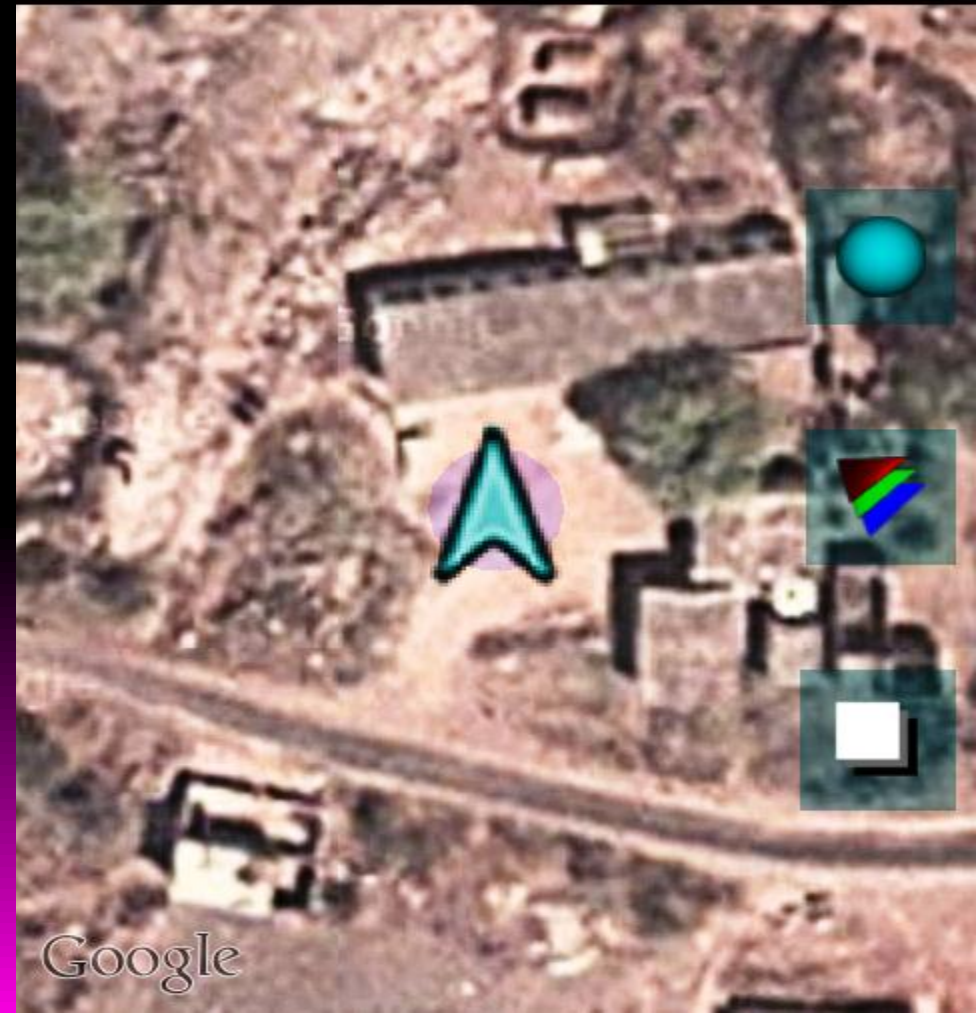
District :- Nalgonda

State :- Andhra Pradesh

Geographical Coordinates :

Latitude :- 16.61 N

Longitude :- 78.95 E



TIMMAPUR AT A GLANCE

Geographical Area :-

Total Area :- 416 hectares

Cultivated Area :- 105 hectares

Residential Area :- 15 hectares

Wasteland :- 37 hectares

Total population :- 2026

Total Households :- 519

Sex ratio :- 979

Literacy :- 43 %



TIMMAPUR AT A GLANCE

Comprising of 5 hamlets :-

1. Timmapur

2. Palgu Thanda

3. Buddha Thanda

4. Chenchu Colony

5. Paddiraju Bavi



TIMELINE OF MAJOR EVENTS



<u>EVENTS</u>	<u>YEAR</u>
PRIMARY SCHOOL	1957
ELECTRICITY	1975
CONCRETE HOUSE	1988
ANGANWADI CENTRE	1988
PANCHAYAT BHAVAN	1993
RATION SHOP	1997
LANDLINE PHONE	1998
MOBILE PHONE	2005
COMMUNITY HALL	2008

COMMUNITY CATEGORISATION

HINDUS :- 79 %

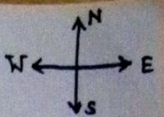
MUSLIMS :- 17 %

CHRISTIANS :- 4%

UNDEFINED:- 1%



RESOURCES MAP



INFRASTRUCTURE



METTLED ROADS

OVERHEAD TANK



INFRASTRUCTURE



PANCHAYAT BUILDING



ANGANWADI CENTRE

INFRASTRUCTURE



GOVERNMENT SCHOOL

ELECTRICITY
CONNECTION



INFRASTRUCTURE



POST OFFICE

HANDPUMP



EDUCATION



LITERACY RATE:- 43 %

MALE LITERACY :- 53 %

FEMALE LITERACY :- 32 %

TOTAL NO. OF SCHOOLS :- 4

HIGH ENROLLMENT RATE

VERY LOW DROPOUT RATE

COMPUTER LAB IN SCHOOL



EDUCATION



SCHEMES BEING IMPLEMENTED :-

- RAJIV GANDHI VIDYA MISSION



- MID DAY MEAL SCHEME



- SCHOLARSHIPS TO STUDENTS



HEALTH



The people in the village are generally healthy.

Good medical facilities available.

Immunization Programs held regularly.

ANM & ASHA workers are active in the village.

Health sub-centre in Timmapur.

Regularly visited by doctors.



HEALTH



Various schemes in Health Sector

- JANANI SURAKSHA YOJANA
- ABHAY HASTAM (Old Age Pension Scheme)
- MATRITVA SAHYOG YOJANA

DEVELOPMENTAL & POVERTY ALLEVIATION PROGRAMS

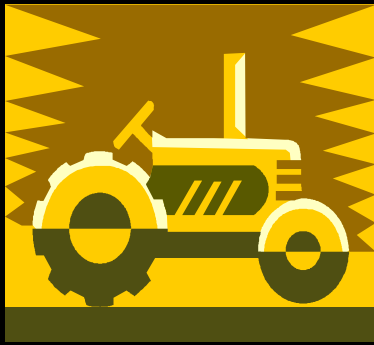
MGNREGA

INDIRAMMA SCHEME

INDIRA JALA PRABHA

**INTEGRATED WATER MANAGEMENT
PROGRAM**





AGRICULTURE



LAND USE PATTERN – Mainly used for cultivation

PRIMARILY RED & BLACK SOIL .



MAIN CROPS GROWN – Cotton, Jowar, Bajra

POOR GOVT PROCUREMENT & IRRIGATION FACILITIES.

EXPLOITATION BY LOCAL MONEY LENDERS.

SOCIAL STRUCTURE

SEX RATIO :- 979

AGRICULTURE MAIN SOURCE OF LIVELIHOOD

SEASONAL UNEMPLOYMENT

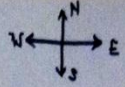
LARGE SCALE MIGRATION

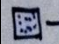
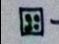
NO GENDER BIAS

COMMUNAL HARMONY



SOCIAL MAP



-  → SC households
-  → ST households
-  → OBC households
-  → Christian Hamlet

SUCCESS STORIES...

* **PASHA** :- Our Translator , an M A in Telgu Literature.



* **AMMAYA** :- A poor tribal girl who completed MBA from Hyderabad , Beneficiary of SC Technical Scholarship from Govt.



* **CHAITANYA** :- A scientist in ISRO from the village school.

* **13 ENGINEERS** from the village school & 1 girl who did her MMBS.

INNOVATION



MAKING WINE BY AN
INNOVATIVE
TECHNIQUE !!

MANY HOUSEHOLDS ARE
USING
THIS TECHNIQUE !!



VILLAGE SEMINAR



SOME RARE GLIMPSES OF TIMMAPUR



THANKING YOU...

